

# MONTHLY MEMBERSHIP PROGRESS REPORT

District 321 E

Results as of: 4/30/2026

GMT:

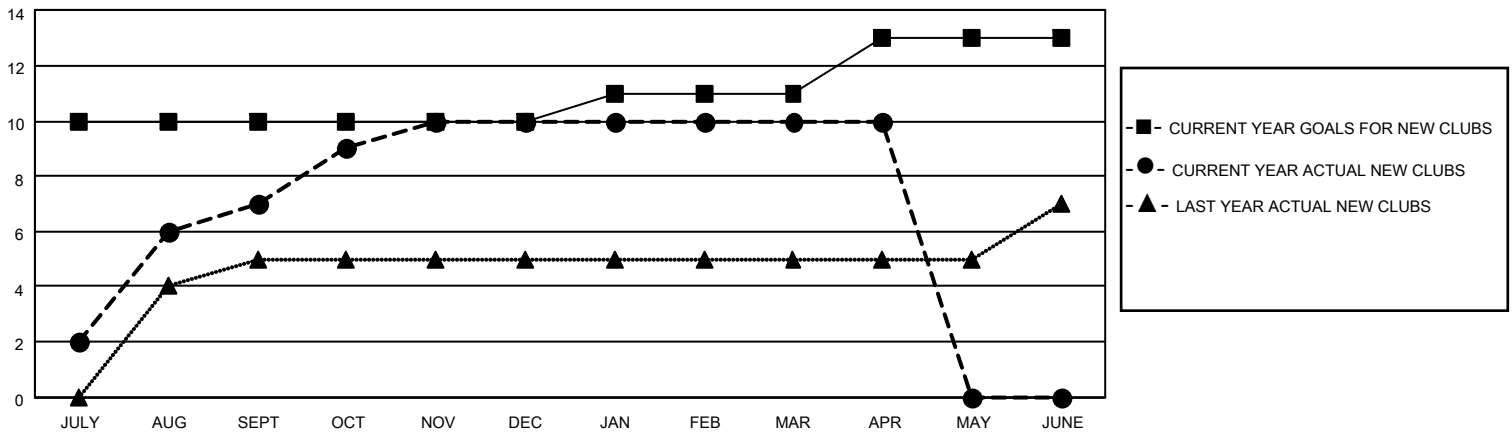
LOCATION INDIA

GMT CA

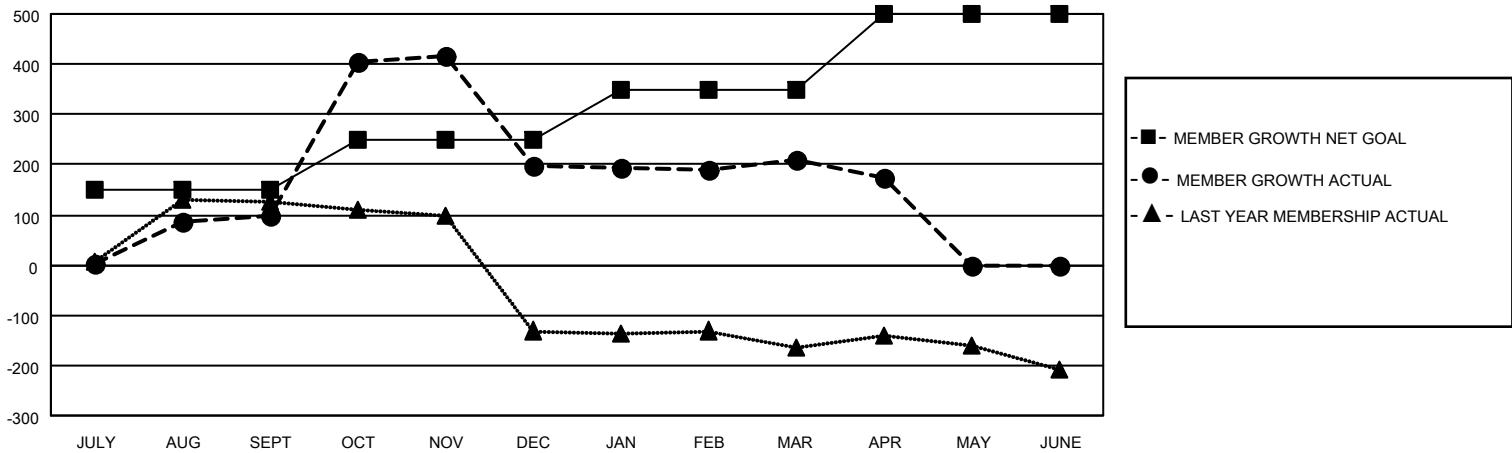
Clubs			
RESULTS FOR 2025-2026			
QUARTER	NEW CLUB GOAL	NEW CLUBS	DROPPED CLUBS
JULY/AUG/SEPT	10	7	1
OCT/NOV/DEC	0	3	5
JAN/FEB/MAR	1	0	0
APR/MAY/JUNE	2	0	2

Members			
RESULTS FOR 2025-2026			
QUARTER	MEMBER GROWTH NET GOAL	MEMBER GROWTH ACTUAL	DROPPED MEMBERS ACTUAL (including transfers)
JULY/AUG/SEPT	150	194	88
OCT/NOV/DEC	100	379	278
JAN/FEB/MAR	100	39	21
APR/MAY/JUNE	150	16	52

GOALS AND ACTUAL NEW CLUBS CUMULATIVE



GOALS AND ACTUAL MEMBERS CUMULATIVE



<b>DROPPED CLUBS: 8</b>	76 CLUBS OF 106 ADDED 1 OR MORE NEW MEMBERS	<b>GENDER DISTRIBUTION</b>	
		MALE 2,122 (66.75%)	FEMALE 1,057 (33.25%)
<b>DROPPED MEMBERS</b>		<a href="#">CLICK HERE FOR CUMULATIVE MEMBERSHIP DATA</a>	TOTAL FAMILY UNIT MEMBERS 1,967
DECEASED 9	CLUB CANCELLED 211		FAMILY MEMBERS PAYING HALF DUES 1,250
OTHER 214	TOTAL 434		